

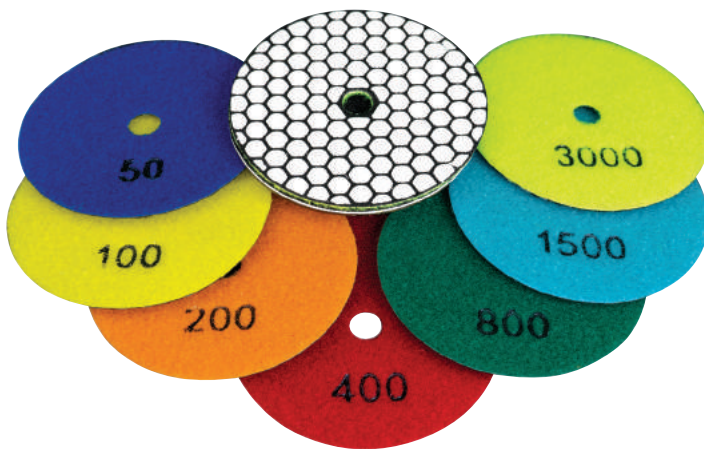
PRODUCT DATA SHEET

CERAMICA DIAMOND DRY POLISHING DISCS

The ultimate dry polishing system for marble, granite and other natural stones, ideal for working on site, widely used by floor renovators, restorers and natural stone floor specialists. These premium diamond dry polishing discs should be used on Angle Grinders with speeds between 11000-13000 RPM.

KEY FEATURES

- Polishing discs have a hook and loop backing for quick release with the backing pad
- 100mm / 4" diameter size
- M14 thread fitment for use on Angle Grinders

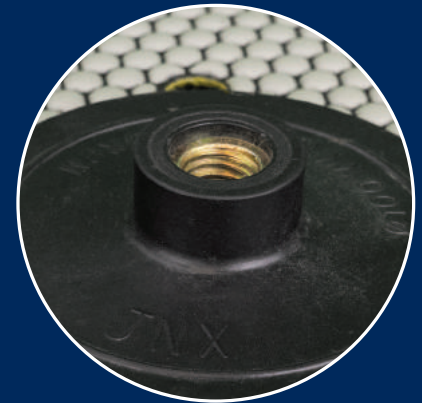


KIT CONTENTS

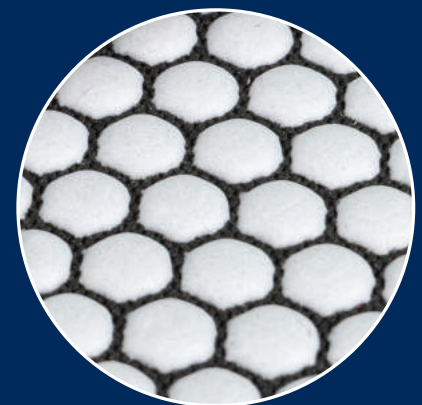
Description	Quantity
4" 50 Grit Polishing Disc	1
4" 100 Grit Polishing Disc	1
4" 200 Grit Polishing Disc	1
4" 400 Grit Polishing Disc	1
4" 800 Grit Polishing Disc	1
4" 1500 Grit Polishing Disc	1
4" 3000 Grit Polishing Disc	1
4" Backing Pad (M14 Thread)	1

HOW TO USE (DRY USE ONLY):

1. Attach the backing pad to an Angle Grinder (M14 fitment)
2. Attach the polishing disc to the backing pad
3. Test the polishing disc on a sample piece of material to check the results before you begin polishing the actual material



M14 THREAD FITMENT FOR USE ON ANGLE GRINDER



POLISHING DISC GRADES FROM 50 - 3000 GRIT

SUITABLE FOR USE ON:

